

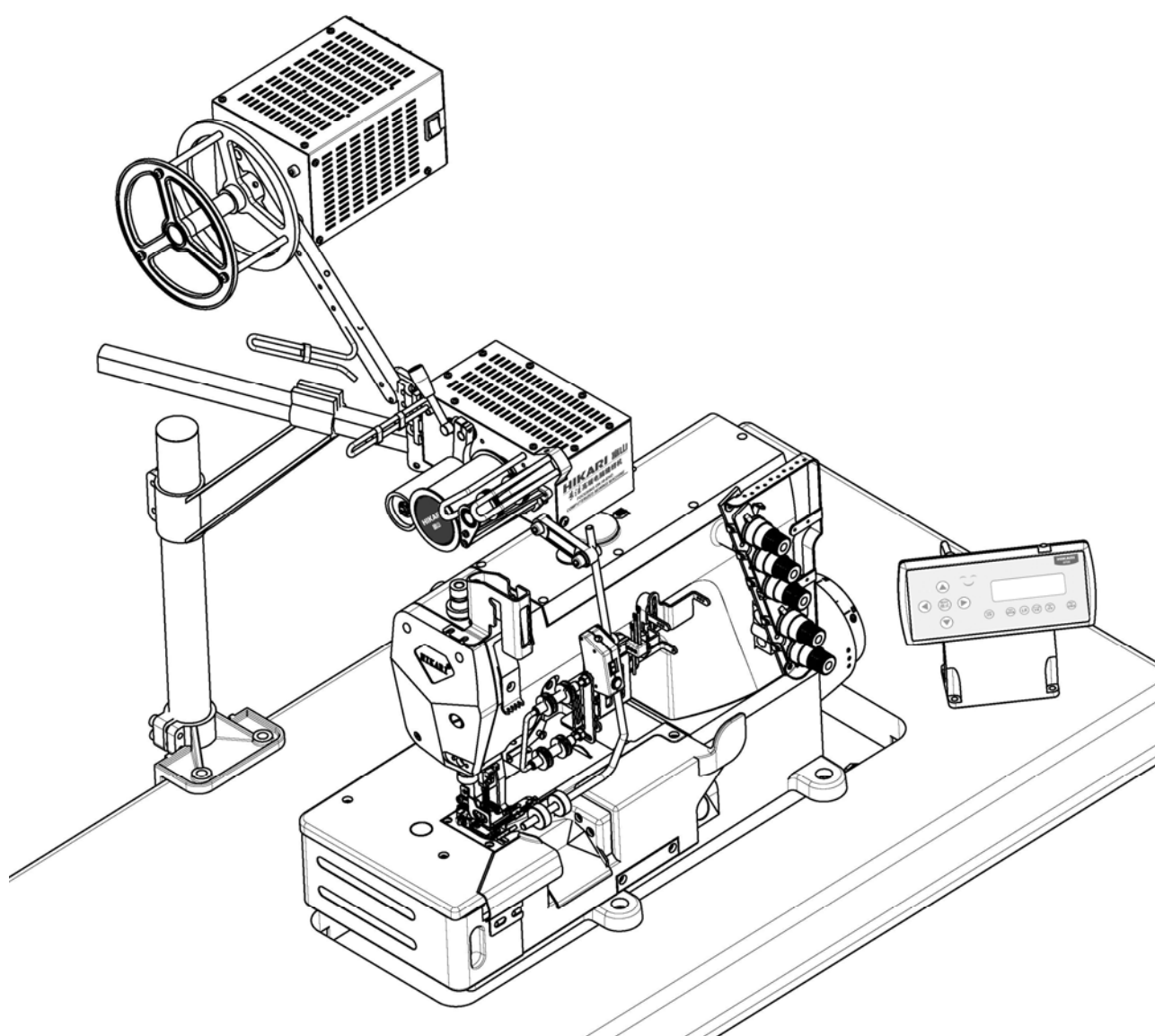
目录/INDEX

一、安装说明/INSTALLATION GUIDE.....	1
二、接线图/WIRING DIAGRAM.....	3
三、调整/ADJUSTMENTS.....	5
四、零件图/PARTS LIST.....	6
五、操作说明/ OPERATION GUIDE.....	13
1、操作面板说明.....	13
2、操作说明.....	14
单段工程.....	14
手动换段范围选择.....	15
自动换段.....	15
返回工作界面.....	15
组数调整.....	15
松带值操作说明.....	16
灵敏度调整说明.....	16
归零校正.....	16
背光调节.....	16
输入密码.....	16
恢复出厂设置.....	17
卡带灵敏度.....	17
3、特殊功能及用户权限.....	18
1.CONTROL PANEL INSTRUCTIONS	19
2.OPERATION INSTRUCTIONS	20
<i>Single section.....</i>	<i>20</i>
<i>Manual change.....</i>	<i>21</i>
<i>Auto-section change.....</i>	<i>21</i>
<i>Return working interface</i>	<i>21</i>
<i>Mode operation.....</i>	<i>22</i>
<i>Free tape operation</i>	<i>22</i>
<i>Sensitivity adjustment.....</i>	<i>22</i>
<i>0kg calibration.....</i>	<i>22</i>
<i>Brightness adjustment.....</i>	<i>22</i>
<i>Input password</i>	<i>23</i>
<i>Restore factory-setting.....</i>	<i>23</i>
<i>Sensitivity of bind.....</i>	<i>23</i>
3.SPECIAL FUNCTIONS AND PURVIEW.....	24

一、安装说明/INSTALLATION GUIDE

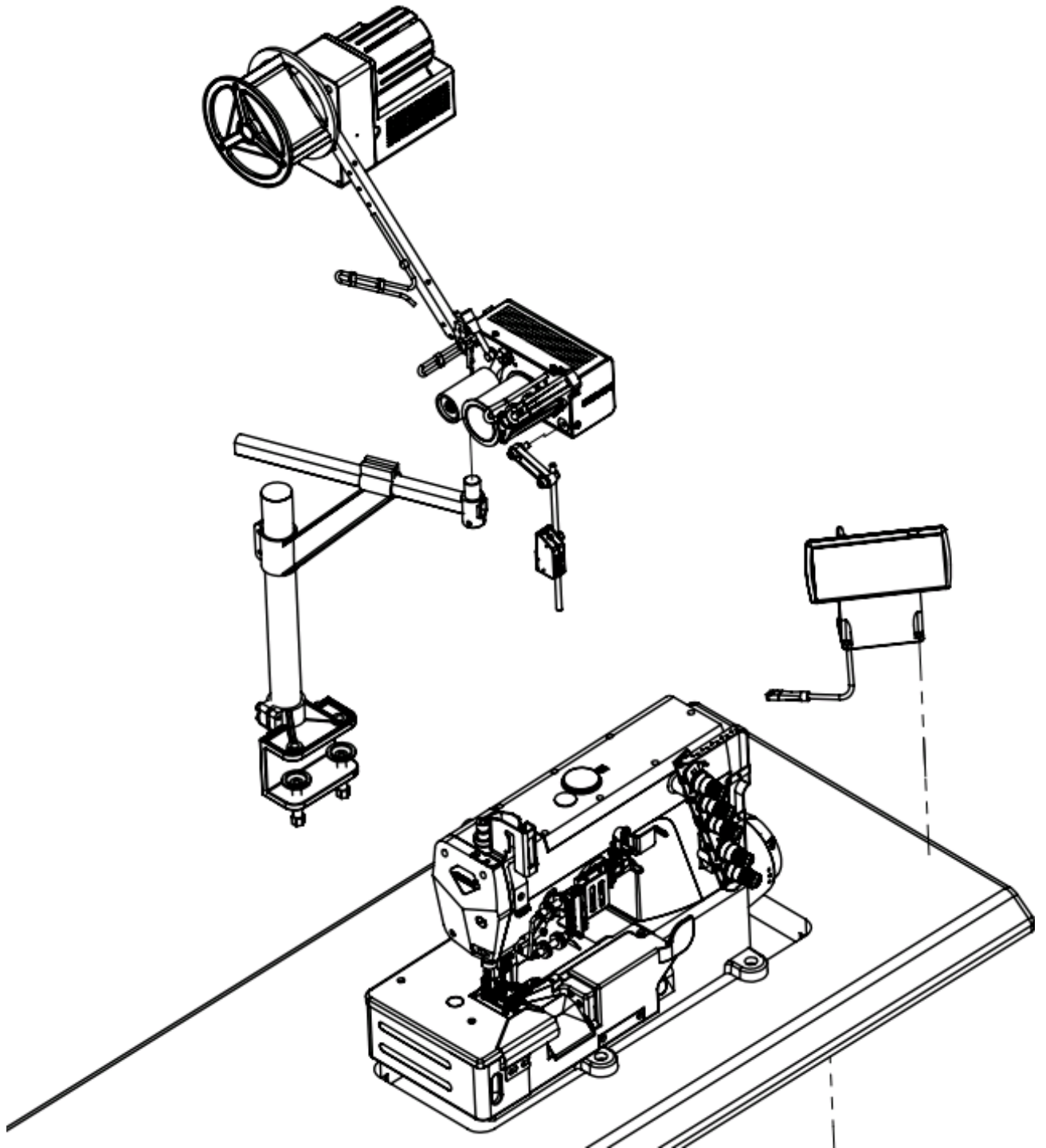
SP09A-MUU 系列组合图

THE ASSEMBLE DIAGRAM FOR SP09A-MUU SERIES

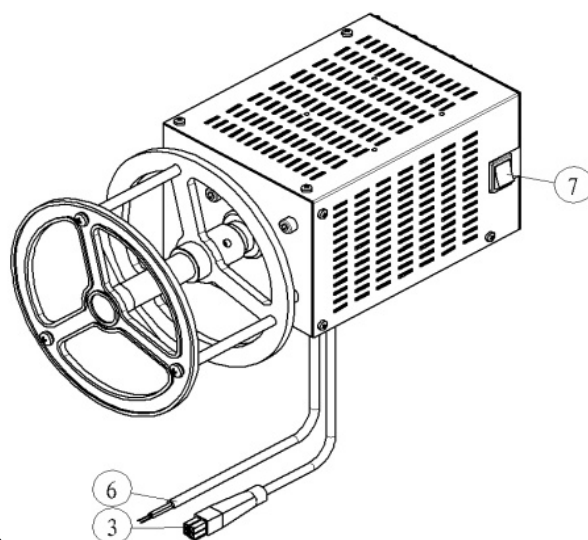
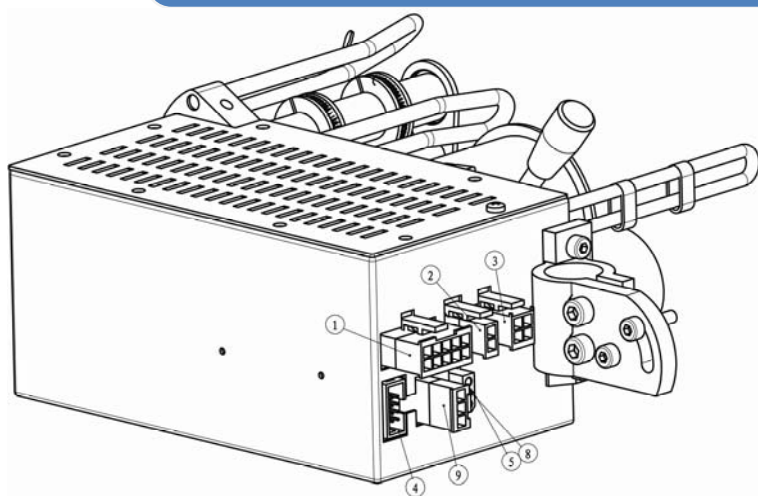


SP09B-MUU 系列组合图

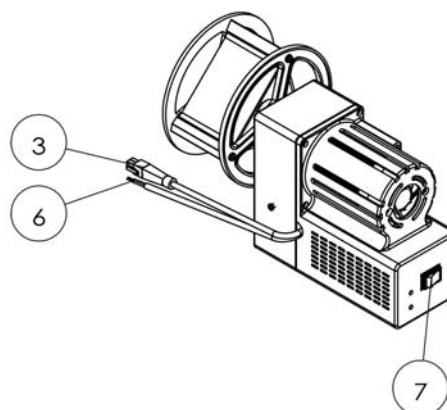
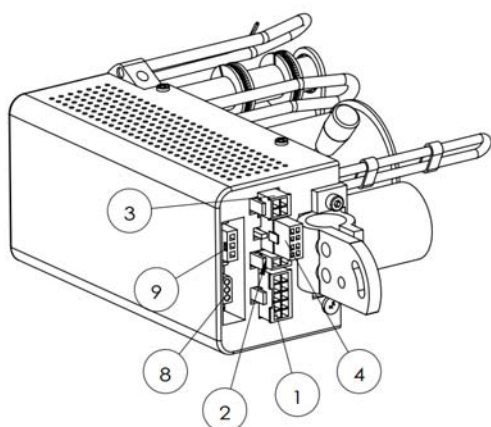
THE ASSEMBLE DIAGRAM FOR SP09B-MUU SERIES



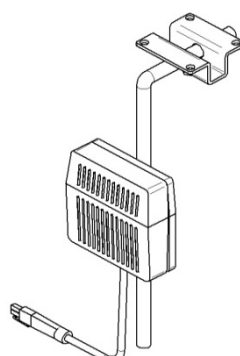
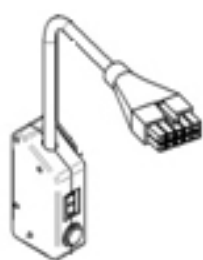
二、接线图/WIRING DIAGRAM



SP09A-MUU 主体
MAIN BODY FOR SP09B-MUU



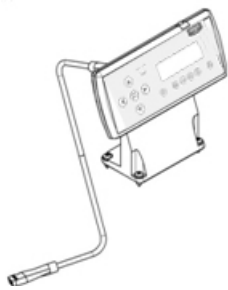
SP09B-MUU 主体
MAIN BODY FOR SP09B-MUU



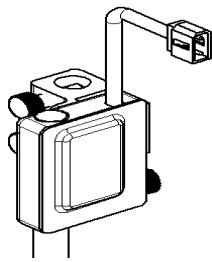
① 手动换段显示开关 LFS
LED+FINGER SWITCH
SP09-0J (选配件)

② 膝动换段开关 KS
KNEE SWITCH
SP09-52(选配件)

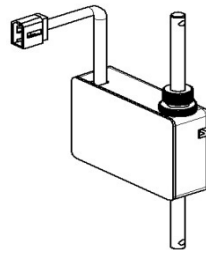
③ 信号线/SIGNAL LINE
⑥ 电源线/POWER LINE
⑦ 总电源开关



④控制面板
CONTROL PANEL



⑤ 无张力开关 E9
人字车专用
(选配件)


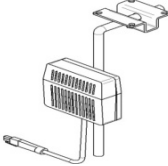
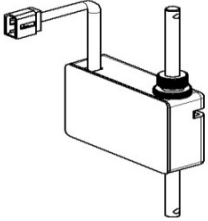
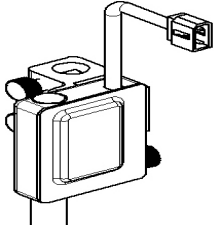


⑧无张力开关 E6-1
饰缝车、包缝车专用
(选配件)



⑨计数器线
SYNCHRONIZER
(富山伺服电控专用)
X-SP09-3

附件列表 (选配件, 可不选)

代号 (CODE)	名称 (NAME)	功能 (Function)	附图 (Picture)	SAP
LFS	手动换段 显示开关	安装该装置用户能够使用手 动换段 调整松紧度, 并能够通过数码 管显示当前段数		20001895
KS	膝动换段 开关	安装该装置能够使用膝盖换 段 调整松紧度		30016851
E6-1	无张力 开关	(E6-1 饰缝车, 包缝车用) 安 装该装置, 送带能够与包缝机 压脚同步。当压脚抬起时, 自 动松开松紧带, 防止针被拉 弯; 当压脚放下时, 自动恢复 之前设定的松紧度		30020789
E9	无张力 开关	(E9 人字车用) 安装该装置, 送带能够与人字车压脚同步, 当压脚抬起时, 自动松开松紧 带, 防止针被拉弯; 当压脚放 下时, 自动恢复之前设定的松 紧度。		30021428

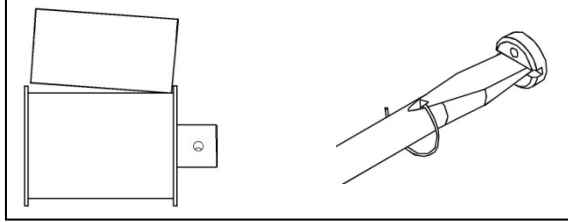
三、调整/ADJUSTMENTS

松紧带左右偏差调整

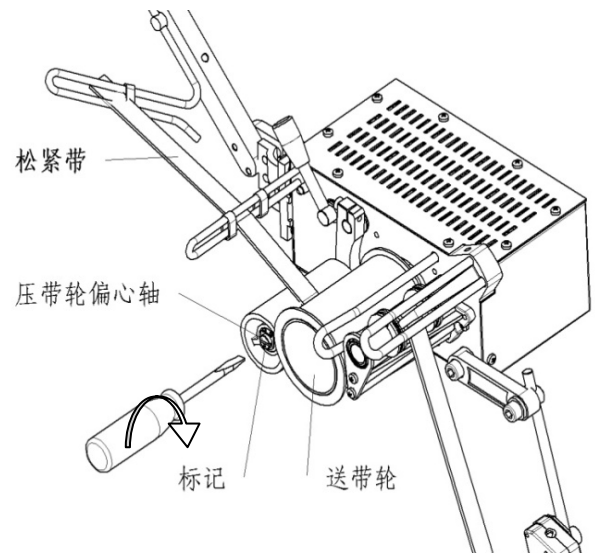
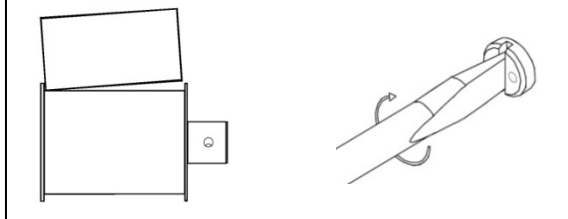
Adjustment for tape sliding over the roller

压带轮偏心轴可调整松紧带送带左右的偏差
Adjust Eccentric Shaft of Pinch Roller can let the tape to go the right or left side.

1、调整松紧带往左边/Adjust to the left side



2、调整松紧带往右边/Adjust to the right side



归零校正

0kg CALIBRATION

以下情况须要做归零校正:

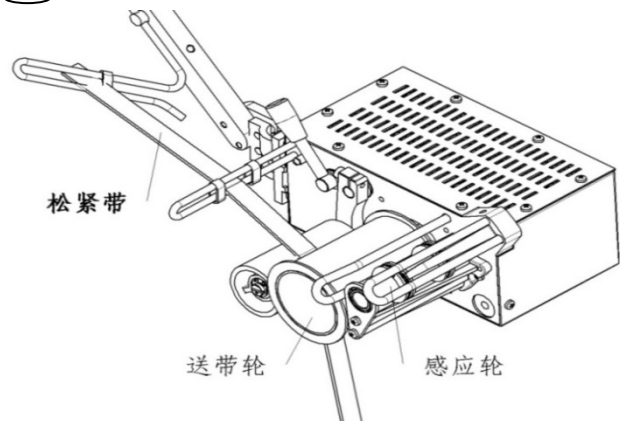
- 1.本装置安装完成后
- 2.尺寸有异常不稳定时
- 3.感应轮在无负载的状态 (移开感应轮上的松紧带),在 任何一段工程中,送料值在 980~999 之间的其中之一值,驱动轮应停止转动而未停止时。

Always correct the calibration after the following instances:

- 1.After installation
- 2.If the device is feeding irregularly
- 3.If the driven roller can not stop.

In any section,the driven roller must stop when the tension value to be adjusted between 980~999 .

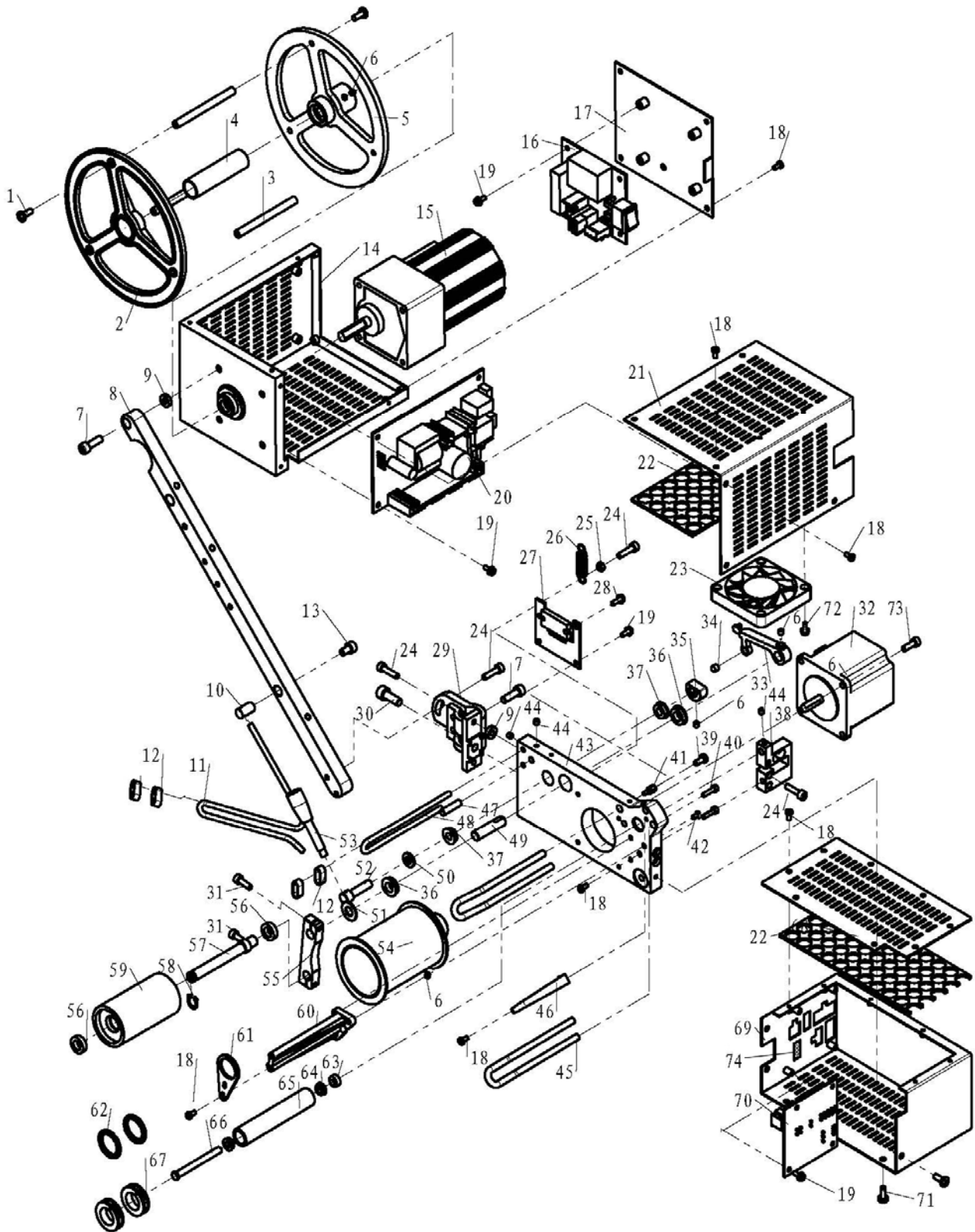
注意: 归零校正时应移开感应轮上的松紧带
NOTICE: Please remove the elastic tape from the sensor bar before calibration



四、零件图/PARTS LIST

SP09A-MUU 系列零件图

PARTS LIST FOR SP09A-MUU SERIES



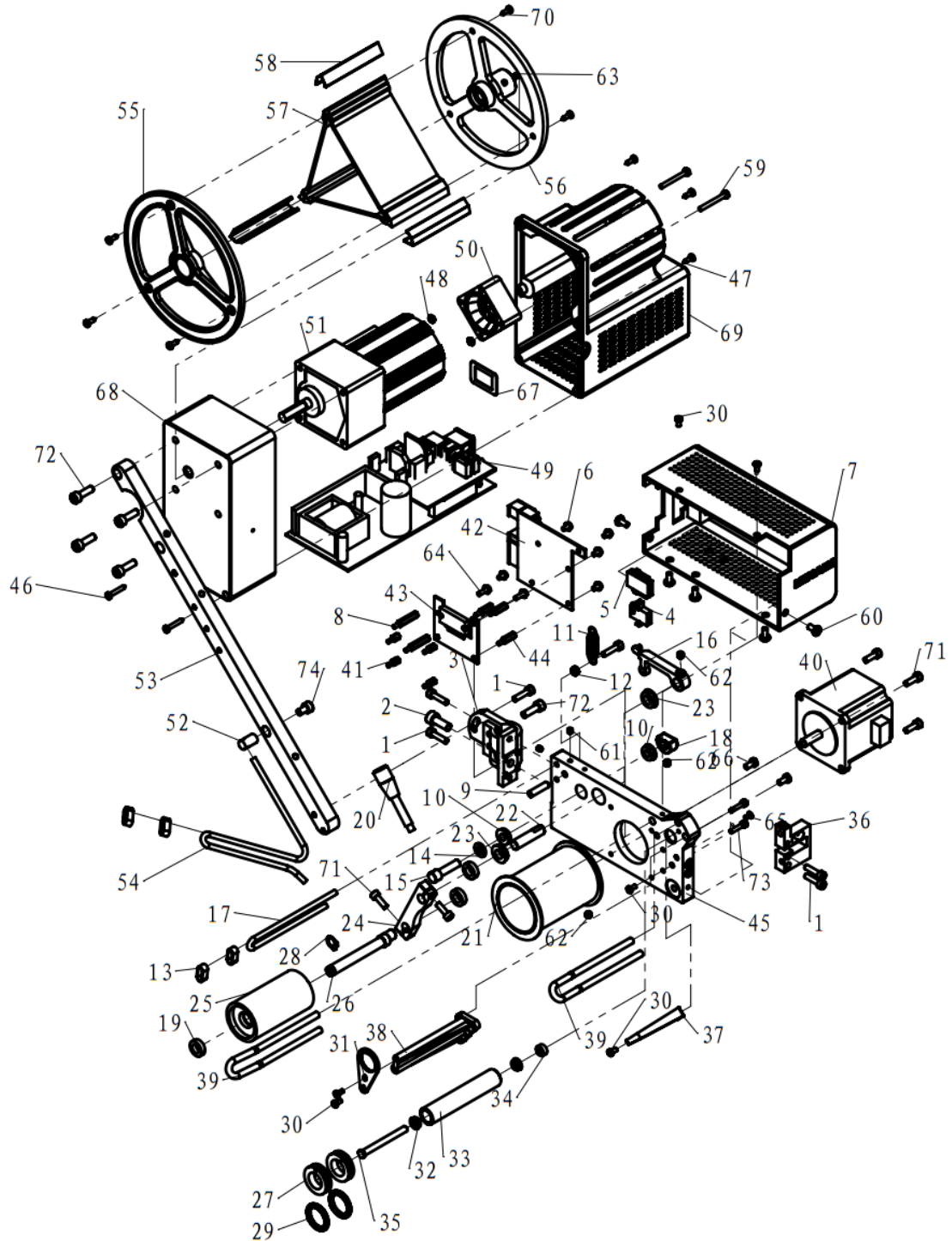
SP09A-MUU 系列零件列表

序号 (REF. NO)	图号 (PART. NO)	名称 (NAME)	数量 (Qty)
1	20-4291032-3	十字槽盘头自攻螺钉 ST2.9*9.5	6
2	SP09-41	抖带轮盖	1
3	SP09-69	抖带轮三角架不锈钢板	3
4	SP09-68	抖带轮三角架	1
5	SP09-40	抖带轮	1
6	01-805000514-1	内六角凹端紧定螺钉 M5*5	5
7	01-505001624-1	内六角圆柱头螺钉 M5*16	6
8	SP09-13	延伸杆	1
9	SP09-55	橡胶垫	4
10	SP09-14	螺纹销	1
11	SP09-15	销杆	1
12	SP09-39	弹圈	4
13	01-505000824-01	内六角圆柱头螺钉 M5*8	1
14	SP09-34	电源外壳下	1
15	MO-SP09Z-06/02	同步电机	1
16	E-SP09-03	抖带电机控制板	1
17	SP09-35	外盖	1
18	01-403000623-1	十字一字槽盘头螺钉 M3*6	22
19	18-403000823-3	三件组合十字一字盘头螺钉 M3*8	12
20	E-SP09-06	开关电源板	1
21	SP09-33	电源外壳上	1
23	MO-SP09Z-04/01	散热风扇	1
24	01-504001624-1	内六角圆柱头螺钉 M4*16	7
25	03-604000320-3	六角螺母 M4*3.2	1
26	SP09-26	弹簧	1
27	E-SP09-02	步进电机控制板组件	1
28	18-403001023-3	三件组合十字一字盘头螺钉 M3*10	2
29	SP09-21	固定架	1
30	01-506001624-1	内六角圆柱头螺钉 M6*12	1
31	01-504001224-1	内六角圆柱头螺钉 M4*12	6
32	MO-SP09Z-50/01	步进电机	1
33	SP09-22	连杆	1
34	SP09-45	磁钢	1
35	SP09-10	凸轮	1
36	14-MF148-2Z	轴承 (转臂用)	2
37	14-MF126-2Z	轴承 (操作杆用)	2
38	U-D-NA125-2KG	称重传感器组件	1
39	01-503000821-1	一字槽薄帽圆柱头螺钉 M3*8	2
40	01-503001424-1	内六角圆柱头螺钉 M3*14	2

41	SP09-54	铜柱	4
42	01-103000421-1	一字槽沉头螺钉 M3*4	1
43	SP09-01	基板	1
44	01-804000414-1	内六角凹端紧定螺钉 M4*4	3
45	SP09-12	保护柱杆	2
46	SP09-06	张力感知滚轮护片	1
47	SP09-04	挡操作杆销	1
48	SP09-05	柱杆	1
49	SP09-07	悬臂	1
50	SP09-47	垫圈	1
51	SP09-46	垫圈	1
52	SP09-11	操作杆销	1
53	SP09-09	操作杆	1
54	SP09-30	送带轮组件	1
55	SP09-23	转臂	1
56	14-MF148-2Z	轴承（压带轮用）	2
57	SP09-08	压布轮轴	1
58	10-0740812-1	挡圈（压带轮用）	1
59	SP09-24	压带轮	1
60	SP09-25	保护架支座	1
61	SP09-02	保护架板	1
62	SP09-29	弹性束圈	2
63	SP09-37	张力感知滚轮衬套	1
64	14-MF95-2Z	轴承（张力感知滚轮用）	2
65	SP09-36	张力感知滚轮	1
66	SP09-03	张力感知滚轮轴	1
67	SP09-38	限位环	2
68	SP09-28	步进电机外壳盖板	1
69	SP09-27	步进电机外壳	1
70	E-SP09-01	系统接口板组件	1
71	01-404000823-1	十字一字槽盘头螺钉 M4*8	4
72	01-403001023-3	十字一字槽盘头螺钉 M3*10	4
73	18-403000623-3	三件组合十字一字盘头螺钉 M3*6	4
74	X-SP09-12	无张力开关连接线	1

SP09B-MUU 系列零件图

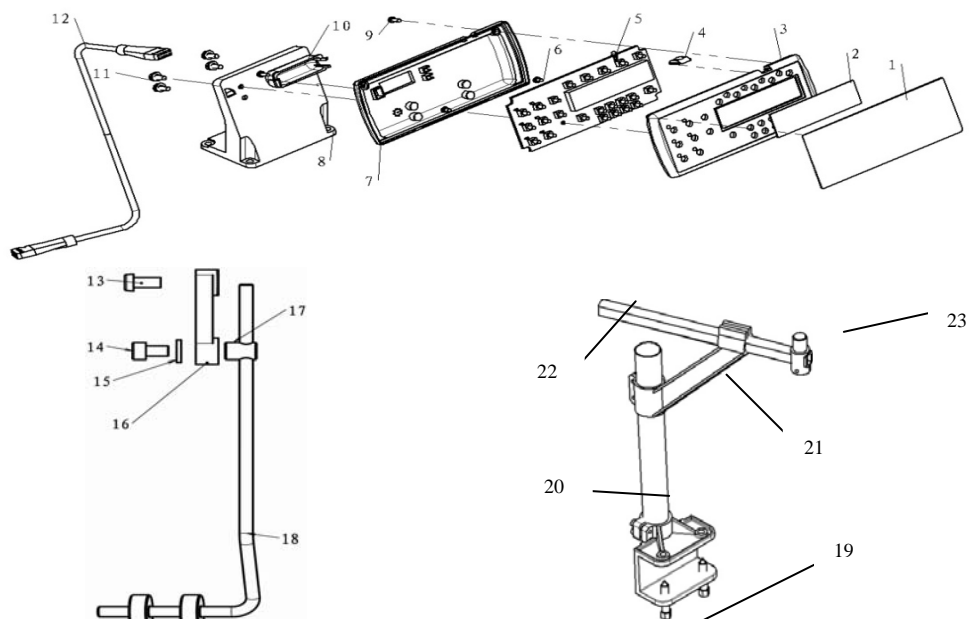
PARTS LIST FOR SP09B-MUU SERIES



SP09B-MUU 系列零件列表

序号 (REF. NO)	图号 (PART. NO)	名称 (NAME)	数量 (Qty)
1	01-504001624-1	内六角圆柱头螺钉 M4*16	5
2	01-506001624-1	内六角圆柱头螺钉 M6*16	1
3	SP09-21	固定架	1
4	X-SP09-12	无张力开关连接线	1
5	X-SP09-15	计数送转接线	1
6	18-403000823-3	三件组合十字一字盘头螺钉 M3*8	6
7	SP09-72	送带机壳	1
8	SP09-77	铜柱 M3*20+6	2
9	SP09-04	挡操作杆销	1
10	14-MF126-2Z	轴承(操作杆用)	2
11	SP09-26	弹簧	1
12	03-604000320-3	六角螺母 M4*3.2	1
13	SP09-89	限位块	2
14	SP09-47	垫圈	1
15	SP09-11	操作杆销	1
16	SP09-22	连杆	1
17	SP09-05	柱杆	1
18	SP09-10	凸轮	1
19	14-MR148-2Z	轴承(压带轮用)	3
20	SP09-09	操作杆	1
21	SP09-30	送带轮组件	1
22	SP09-07	悬臂	1
23	14-MF148-2Z	轴承(转臂用)	2
24	SP09-23	转臂	1
25	SP09-24	压带轮	1
26	SP09-08	压布轮轴	1
27	SP09-38	限止环	2
28	10-0740812-1	挡圈(压带轮用)	1
29	SP09-29	弹性束圈	2
30	01-403000623-1	十字一字槽盘头螺钉 M3*6	6
31	SP09-02	保护架板	1
32	14-MF95-2Z	轴承(张力感知滚轮用)	2
33	SP09-36	张力感知滚轮	1
34	SP09-37	张力感知滚轮衬套	1
35	SP09-03	张力感知滚轮轴	1
36	U-D-NA125-2KG	称重传感器组件	1
37	SP09-06	张力感知滚轮护片	1
38	SP09-25	保护架支座	1
39	SP09-12	保护柱杆	2

40	M0-SP09Z-50/01	步进电机	1
41	SP09-54	铜柱	4
42	E-SP09-08	系统接口板组件	1
43	E-SP09-02	步进电机控制板组件	1
44	SP09-54	铜柱	3
45	SP09-01	基板	1
46	20-4291932-3	ST2.9*19 自攻螺钉	2
47	20-4291032-3	ST2.9*9.5 自攻螺钉	4
48	03-603000240-3	六角螺母 M3	2
49	E-SP09-07	开关电源板组件	1
50	M0-SP09Z-04/02	散热风扇	1
51	M0-SP09Z-06/02	同步电机	1
52	SP09-14	螺纹销	1
53	SP09-13	延伸杆	1
54	SP09-15	销杆	1
55	SP09-41	抖带轮盖	1
56	SP09-40	抖带轮	1
57	SP09-68	抖带轮三角架	1
58	SP09-69	抖带轮三角架不锈钢板	3
59	18-403003023-2	三组合 M3*30 盘头螺钉	2
60	01-404000823-1	十字一字槽盘头螺钉 M4*8	5
61	01-804000414-1	内六角凹端紧定螺钉 M4*4	2
62	01-805000514-1	内六角圆柱头螺钉 M5*5	3
63	01-804000414-1	内六角凹端紧定螺钉 M4*4	1
64	18-403001023-3	三件组合十字一字盘头螺钉 M3*10	2
65	01-103000421-1	一字槽沉头螺钉 M3*4	1
66	01-50300824-1	一字槽薄帽圆柱头螺钉 M3*8	2
67	SP09-74	开关贴纸	1
68	SP09-70	理带机壳左	1
69	SP09-71	理带机壳右	1
70	20-4291032-3	十字槽盘头自攻螺钉 ST2.9×9.5	6
71	01-504001224-1	内六角圆柱头螺钉 M4*12	6
72	01-504001624-1	内六角圆柱头螺钉 M5*16	5
73	01-503001424-1	内六角圆柱头螺钉 M3*14	2
74	01-505000824-1	内六角圆柱头螺钉 M5*8	1
75	SP09-39	弹圈	2



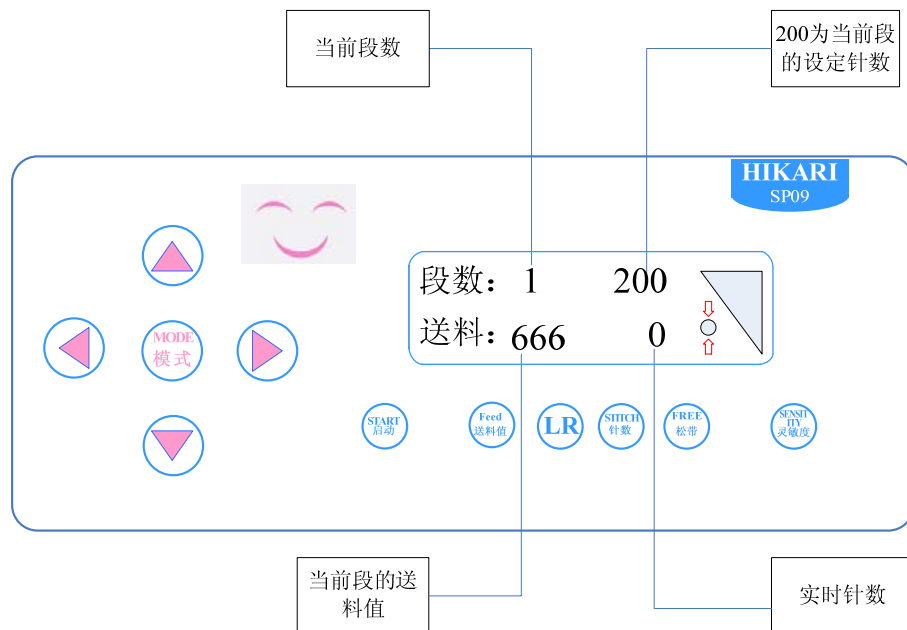
操作面板与支架零件列表

项目 (Pro. No)	图号 (PART.)	名称 (NAME)	数量
1	SP09-49	面板贴面	1
2	CP01-06-A00	液晶保护壳	1
3	CP01-02-A00	操作面板前盖	1
4	CP01-05-A00	指示灯盖	1
5	E-SP09-04	操作面板电路板组件	1
6	20-4290832-3	十字槽盘头自攻螺钉	2
7	CP01-03-A00	操作面板后盖	1
8	SP09-44	台板面板支架板	1
9	20-4291032-3	十字槽盘头自攻螺钉	2
10	CP01-04-A00	引线扣盖	1
11	18-404001023-3	三件组合十字一字盘头螺钉 M4*10	4
12	X-SP09-11	操作面板连接线/01	1
13	01-506001624-1	内六角圆柱头螺钉 M6*16	1
14	01-506001024-1	内六角圆柱头螺钉 M6*10	1
15	05-064161200-1	平垫片 6.4*1.6*12	1
16	SP09-19	数码管连杆	1
17	SP09-20	数码管螺纹柱	1
18	导带连杆	弹簧垫圈 6.3*1.6 (图号: 07-0631616-1)	1
		内六角圆柱头螺钉 M6 (图号: 01-506001024-1)	1
		数码管螺纹柱 (图号: SP09-20)	1
		数码管连杆 (图号: SP09-19)	1
		挡圈 (图号: 313.26-31)	2
		套管 (图号: 313.26-32)	1
		开口档圈 3×0.6×7 (图号: 06-0300607-1)	2
		过线架 I (图号: 313.26-30)	1
		支承杆 (图号: SP09-83)	1

18	导带连杆	连接套 (图号: SP09-84)	1
		内六角凹端紧定螺钉 M4*4 (图号: 01-804000414-01)	2
19	E8 夹座组	支承座 (SAP: 30025622)	1
20		立柱 (SAP: 30025623)	1
21		活动支架 (SAP: 30025624)	1
22		横梁 (SAP: 30025625)	1
23		横竖支圆柱 (SAP: 30025626)	1
24		橡胶塞 (30006089)	2
25		【内六角槽圆柱头螺钉】M6 × 16 (SAP: 30005200)	4
26		【六角螺母】M6 × 5 (SAP: 30005585)	4
27		【内六角槽圆柱头螺钉】M6 × 25 (SAP: 30005204)	2
28		【内六角槽无帽凹端螺钉】M8 × 10 (SAP: 30005363)	2

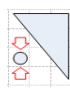
五、操作说明/ OPERATION GUIDE

1、操作面板说明



符号说明:

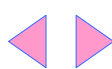
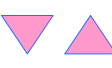







666 闪烁标志, 表示其值处于可修改状态。

 松紧度大小显示。

视窗中词语含义说明:

- 1.段数: 显示当前有效段号, 共 8 段, 范围 1~8。
- 2.送料: 显示当前段松紧度设定值, 范围 999~1。
- 3.针数: 显示当前段在自动换段功能中的开或关及设定的针数, 范围 1~999。
- 4.当前组:显示记忆组数。
- 5.灵敏: 显示当前段灵敏度。

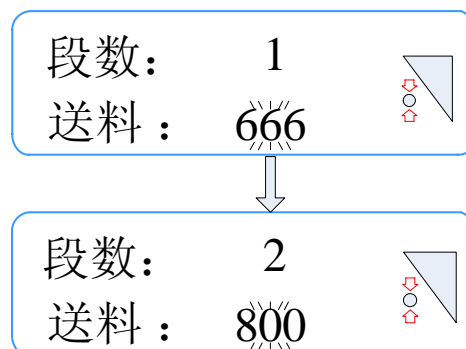
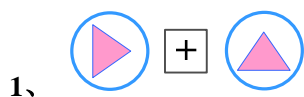
按键功能使用说明

1.  选择键: 工程的选择及特殊功能的设定.
2.  +,-键 :更改各项功能设定值.
3.  : 调整当前有效组数.
4.  : 启动自动换段功能.
5.  : 手动返回送料模式界面.
6.  : 进入特殊功能模式.
7.  : 进入针数设定模式, 选择当前段在自动换段中的开或关.
8.  : 进入灵敏度调整模式.
9.  : 设定松紧带值.

2、操作说明

单段工程

例: 调整第 2 段工程送料值为 800





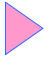




手动换段范围选择

例:选 1, 2, 3 工程为手动换段 (换段数码管和膝控开关)

- 1、 进入特殊功能
- 2、  手动换段范围选择

自动换段

例: 选 1, 2, 3 工程为自动换段(计数器连接线需要与电控箱相连,或另配编码器)




- 1、按照单段工程设置好各段
- 2、 切换至针数设定模式
- 3、  +   从 1 到 3 设置各段针数
- 4、 段 3 针数开 (设置段 3 针数开, 1、2、3 段针数就全开了)
- 5、 从第一段开始启动执行

返回工作界面

例:在手动换段范围选择的界面切换到工作界面

- 1、 返回工作界面

组数调整

- 1、 进入组数调整模式
- 2、  调整组数

0: 1 — 2
手动换段范围

0: 1 — 3
手动换段范围

段数: 1 100
送料: 800 0

段数: 1
针数: off 100

段数: 3
针数: off 100

段数: 3
针数: on 200




当前组: 0

当前组: 1

0: 1 — 2
手动换段范围



段数: 1 200
送料: 800 0

松带值操作说明

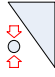
- 1、 进入松带调整模式
- 2、  调整大小

作用: 若在缝制过程中,希望松紧带自然松开,根据不同的松紧带,会需要调整自然伸开的程度。

灵敏度调整说明






- 1、 进入灵敏度调整模式
- 2、  调整灵敏度

段数: 1
灵敏: 95



作用: 在停止车缝时,驱动轮及松紧带不停的前后颤动,需适当减小灵敏度数值,直至不再明显抖动为止。但要注意,灵敏度过小,会影响尺寸准确度,因此在不振荡的前提下,值越大越好。

归零校正

- 1、 进入特殊功能
- 2、  切换至参数 1
- 3、  归零校正后,参数一致

0: 1 — 2
手动换段范围

1: 实际压力 61
参考压力 50

1: 实际压力 61
参考压力 61

2: 60
背光:

2: 80
背光:


7: 0
密码

7: 200
密码



背光调节

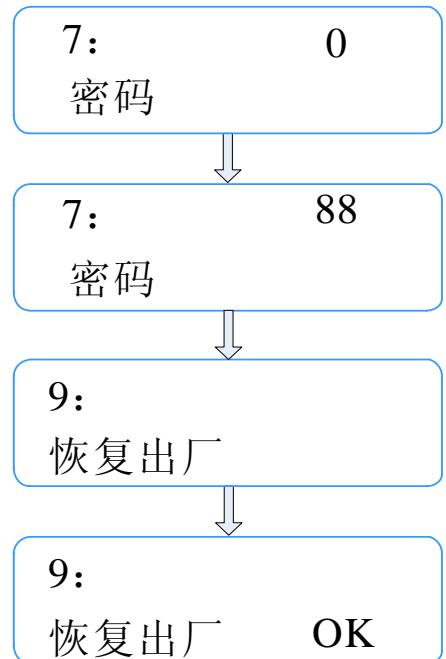
- 1、 进入特殊功能
- 2、  切换至参数 2
- 3、  调整背光值

输入密码

- 1、 进入特殊功能
- 2、  切换至 7
- 3、  输入密码值

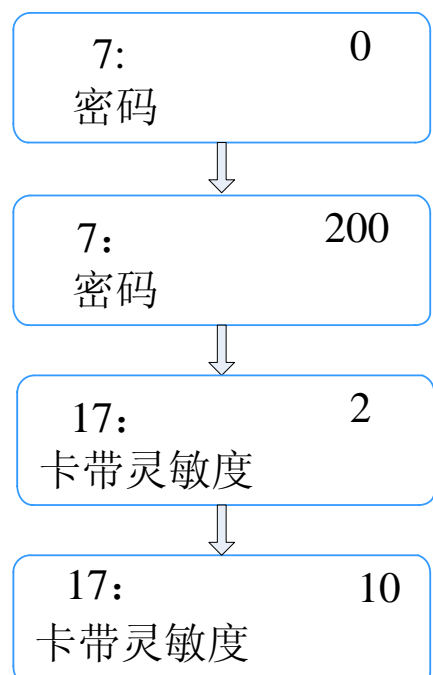
恢复出厂设置

- 1、 进入特殊功能
- 2、  切换至 7
- 3、  输入密码值
- 4、  切换至参数 9
- 5、按下 , 松开, 然后等待几秒, 直到显示_OK_



卡带灵敏度

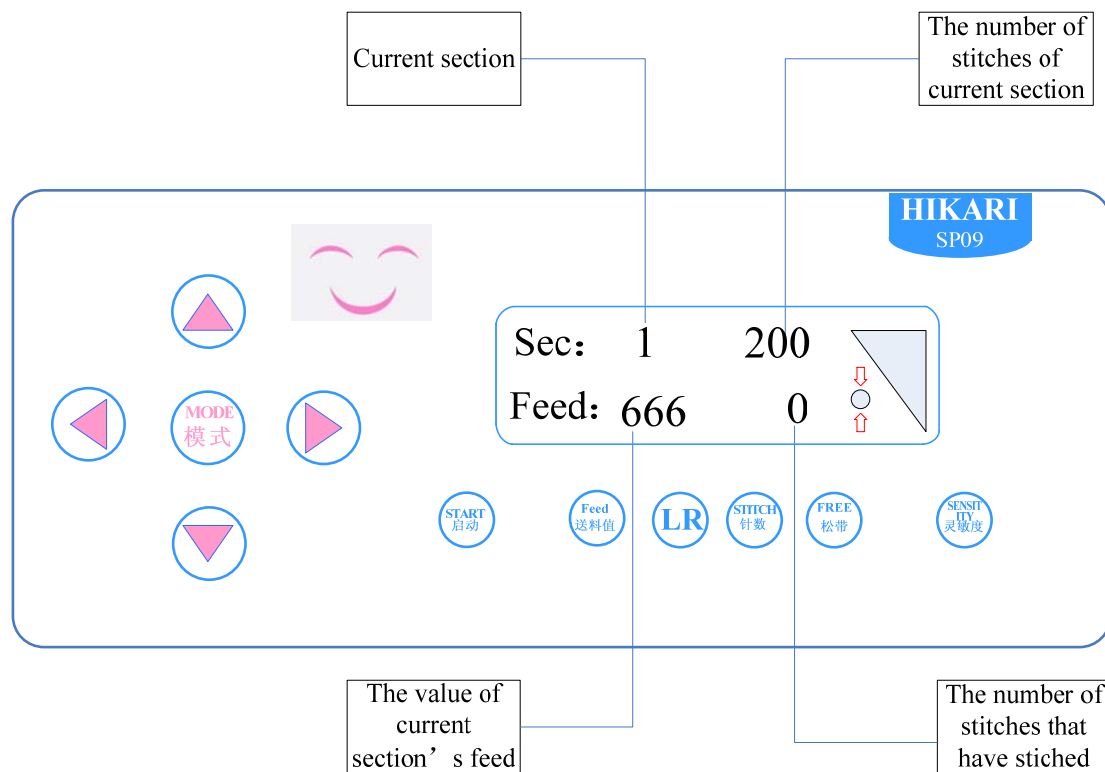
- 1、 进入特殊功能
- 2、  切换至 7
- 3、  输入密码值
- 4、  切换至参数 17
- 5、  调整灵敏度



3、特殊功能及用户权限

特殊功能	用户权限		
0 手动换段 1 归零校正 2 背光亮度 3 面板软件版本 4 面板硬件版本 5 系统软件版本 6 系统硬件版本 7 用户密码	普通用户	中级用户	超级用户
8 语言选择 9 恢复出厂 10 报警选择 11 Press			
12 13 14 15 16 P_Uk 17 卡带灵敏度			

1. Control panel instructions



Signal description:

666

The value can be modified when the value is flashing.

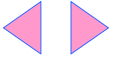
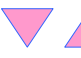









This signal displays degree of tightness.

Words instructions in the display

1. Sec: Indicate current section ,range from 1 to 8.
2. Feed: Indicate the value of current section feed,range from 999 to 1.
3. Stch: Indicate that current section is on or off in auto switch section function,and the setting value of stitches range from 1 to 999.
4. Mode: Indicate the number of memorized program
5. Sens: Indicate sensitivity of current section.

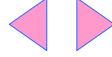
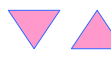
Instructions of keys

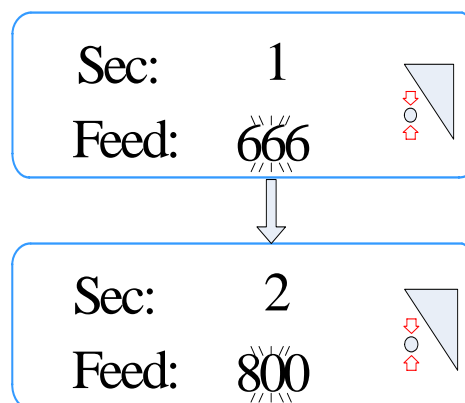
1.  FUNCTION SETTING: Use these keys to select section and set special functions.
2.  +,-KEY : Use the +,-key to modify all settings.
3.  : Use this key to memorize program.
4.  : Start up auto switch section function .
5.  : Return working interface.
6.  : To set the setting of special functions.
7.  : To set the number of stitch and select on or off of current section in auto switch section function.
8.  : To set sensitivity.
9.  : To set the elasticity value.

2. Operations instructions

Single section




Example : set the value of the second section feed

1.  To 2
2.  Adjust the value of feed



Manual change

Example: Select 1,2,3 as manual change
(finger switch or knee switch)

- 1、  Enter special function
- 2、   Adjust the range.



0: 1 — 2
Sec Range





0: 1 — 3
Sec Range



Auto-section change



Example: Select 1,2,3 as auto-section change(Optional
stitch counter-SY required)


- 1、 Set each section' parameter according to Single Section

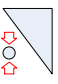

- 2、   To the stitch-setting mode

- 3、   +   Set the number of every section
Stitch (from 1 to 3)

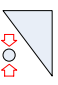

- 4、   Select the 3 section-stitch is on (if the 3 section-stitch
is on ,then all sections are on from 1 to 3)

- 5、   Start up auto-section change.

Sec: 1 100 
Feed: 800 0 

Sec: 1 100 
Stch: off 100 

Sec: 3 100 
Stch: off 100 



Sec: 3 200 
Stch: on 200 

0: 1 — 2
Sec Range




Sec: 1 200 
Feed: 800 0 

Return working interface

Example: from manual change interface to working
interface

- 1、   Return working interface.


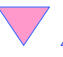

Mode operation

- 1、 Enter
- 2、  Decrease or increase sewing mode.

Mode: 0


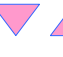
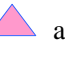
Mode: 1

Free tape operation

- 1、 Enter
- 2、  Decrease or increase

Function : it can adjust the settings according to the different tap .

Sensitivity adjustment



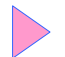
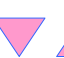

- 1、 enter
- 2、  adjust sensitivity.

Sec: 1

Sens: 99

Function : if the driven roller and elastic vibrate forward or backward all the time when sewing has stopped, it is necessary to adjust sensitivity. Notice that it will effect the accuracy when the value of sensitivity is too less. Therefore, the value is better with large number without vibration.

0kg calibration

- 1、 Enter special function
- 2、  To 1
- 3、  Adjust the settings

0: 1 — 2
Sec Range




1:RealPre 61
ReferPre 50



1:RealPre 61
ReferPre 61

2: 60
Back Light



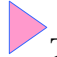


2: 80
Back Light

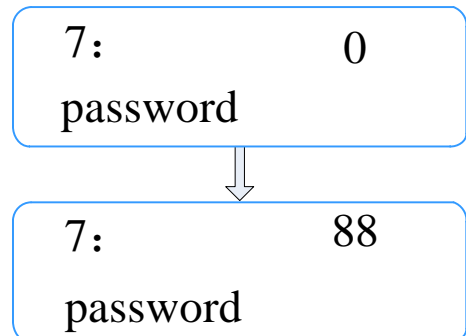
Brightness adjustment

- 1、 Enter special function
- 2、  To 2



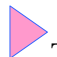



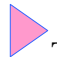

- 3、   Adjust the value of brightness

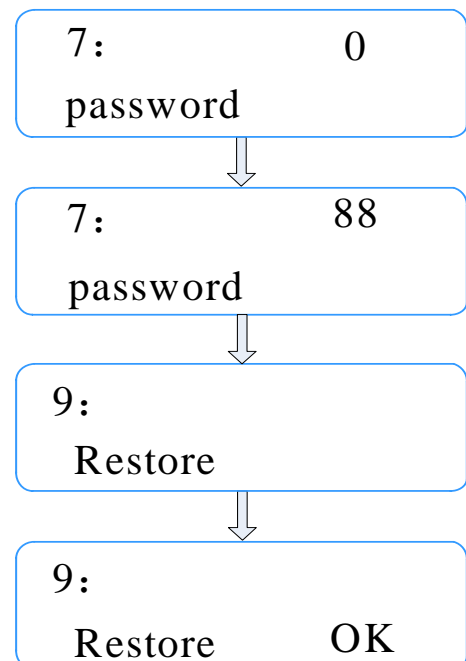
Input password

- 1、  Enter special function
- 2、   To 7
- 3、   Input password



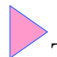








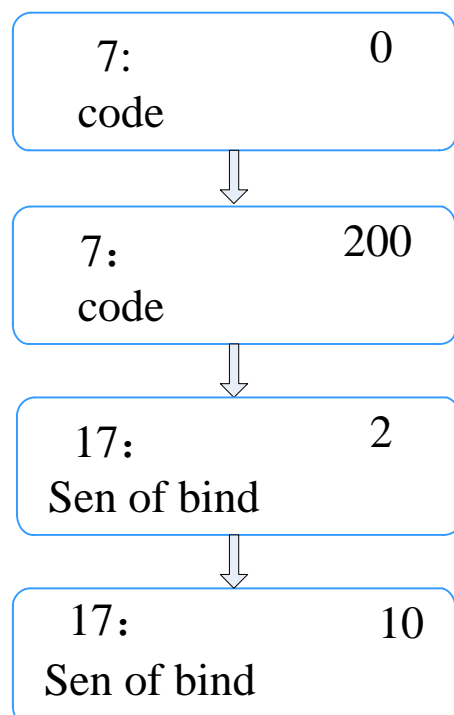
Restore factory-setting

- 1、  Enter special function
- 2、   To 7
- 3、   Input password
- 4、   To 9
- 5、  Press,loosen, wait until displaying ‘_OK_’



Sensitivity of bind

- 1、  Enter special function
- 2、   To 7
- 3、   Input password
- 4、   To 17
- 5、   adjust sensitivity.



3. Special functions and purview

Special functions	Purview		
0 Sec Range 1 0kg cat(calibration) 2 Back Light 3 PSV(Panel software version) 4 PHV(Panel hardware version) 5 SSV(System software version) 6 SHV(System hardware version) 7 Password	Ordinary user	Intermediate user	Super user
8 Languge 9 Reset 10 Alarm 11 Press			
12 13 14 15 16 P_Uk 17 Sen of bind			

故障排除/TROUBLE SHOOTING

序号 NUM	故障码 ERR	问题现象 Symptom	原因 Cause	对策 Solution
1	1	按键无反应 LED 全亮	1. 面板连接线接触不良 2. 对应按键损坏	1. 检查面板连接线 2. 联系维修人员检修
2	2	面板屏幕无显示, 面板电源指示灯不亮	1. 面板线缆未连接好, 或线缆损坏 2. 面板电路故障	1. 连接好电缆 2. 通知维修人员更换维修
3	3	面板电源指示灯不亮	1. 电源未接好 2. 连接线未接好	1. 参照图示接线图, 连接好各连接线, 打开总电源开关
4	4	P Light Load (液晶显示), 轻压张力感知轮 63, 面板压力指示无变化	1. 压力传感器连接线接触不良	1、打开步进电机外壳盖板 66, 检查传感器连接线 2、联系维修人员检修
5	5	压力传感器过载	1. 压力传感器过载	1. 检查传感器感应轮是否被松紧带卡死, 若无请联系维修人员检修
6	6	卡带报警	1. 传感器零点偏移	1、进行特殊功能模式, 进入 11 号参数. 然后打开步进电机外壳盖板 68, 用短镙丝刀逆时针调整图中指示基准电阻, 面板 11 号参数值, 调至 980, 重新打开报警功能即可 
7		车缝不准确	1. 灵敏度调整不当 2. 缝制员的手势不熟练 3. 送带过程不顺畅	1. 在电机无明显振动的情况下, 尽可能高的提高灵敏度数值 2. 缝制员在车缝过程中, 应保持送布料手势一致, 不可时松时紧 3. 调整限宽环, 使其只比松紧带略宽
8		车缝停止时, 送带轮振动不停	1. 灵敏度过高 2. 压带轮偏心轴不合适	1. 参照“灵敏度调整说明”调整 2. 参照“松紧带左右偏调整”调整
9		车缝时, 抖带电控箱振动过大	1. 橡胶垫 9 压的过紧, 未起到减振效果	1. 稍稍松下延伸杆锁定镙钉

SP09 计数器线连接图如下所示

